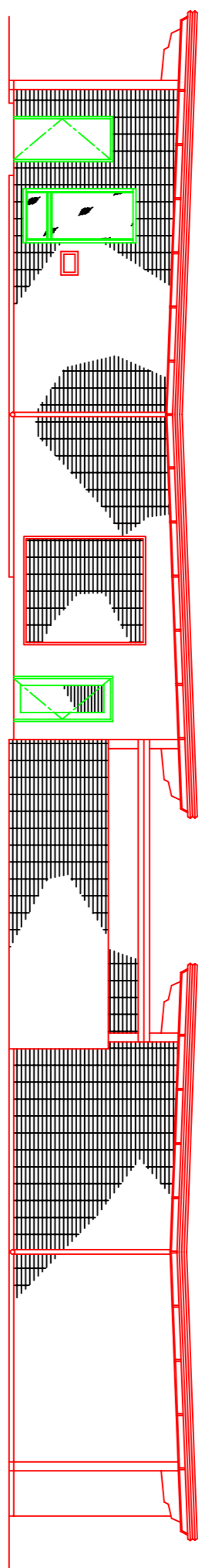
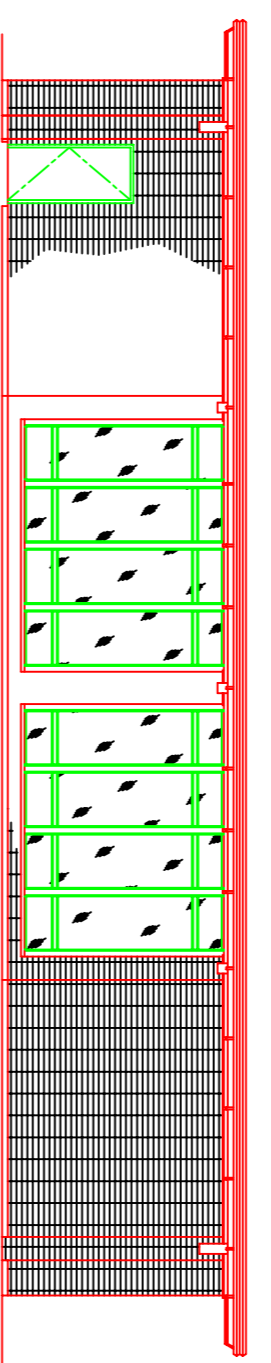


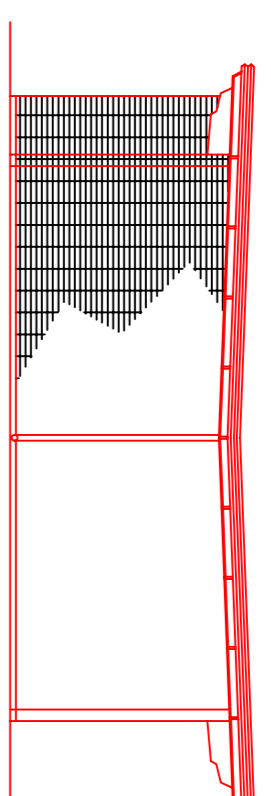
SOUTH ELEVATION  
SCALE: 1/8" = 1'-0"



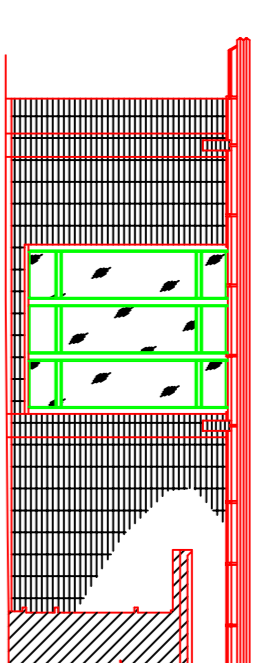
EAST ELEVATION  
SCALE: 1/8" = 1'-0"



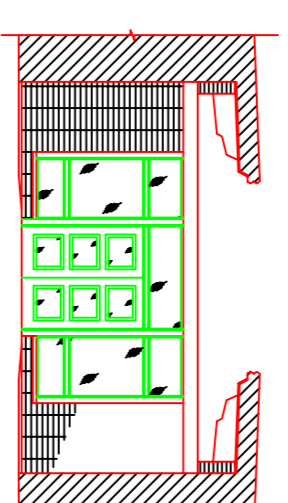
NORTH ELEVATION  
SCALE: 1/8" = 1'-0"



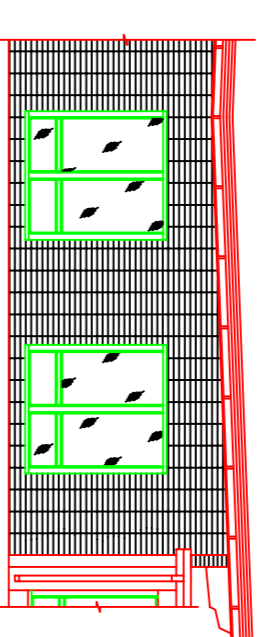
WEST ELEVATION  
SCALE: 1/8" = 1'-0"



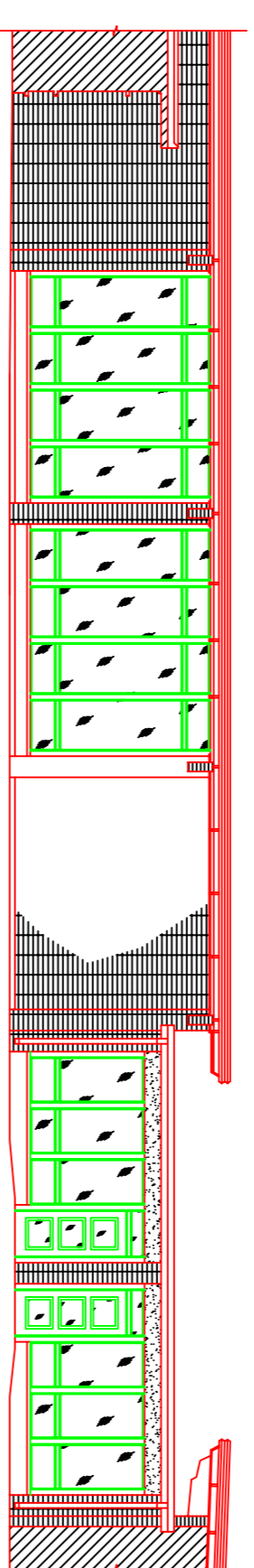
SOUTH ELEVATION  
SCALE: 1/8" = 1'-0"



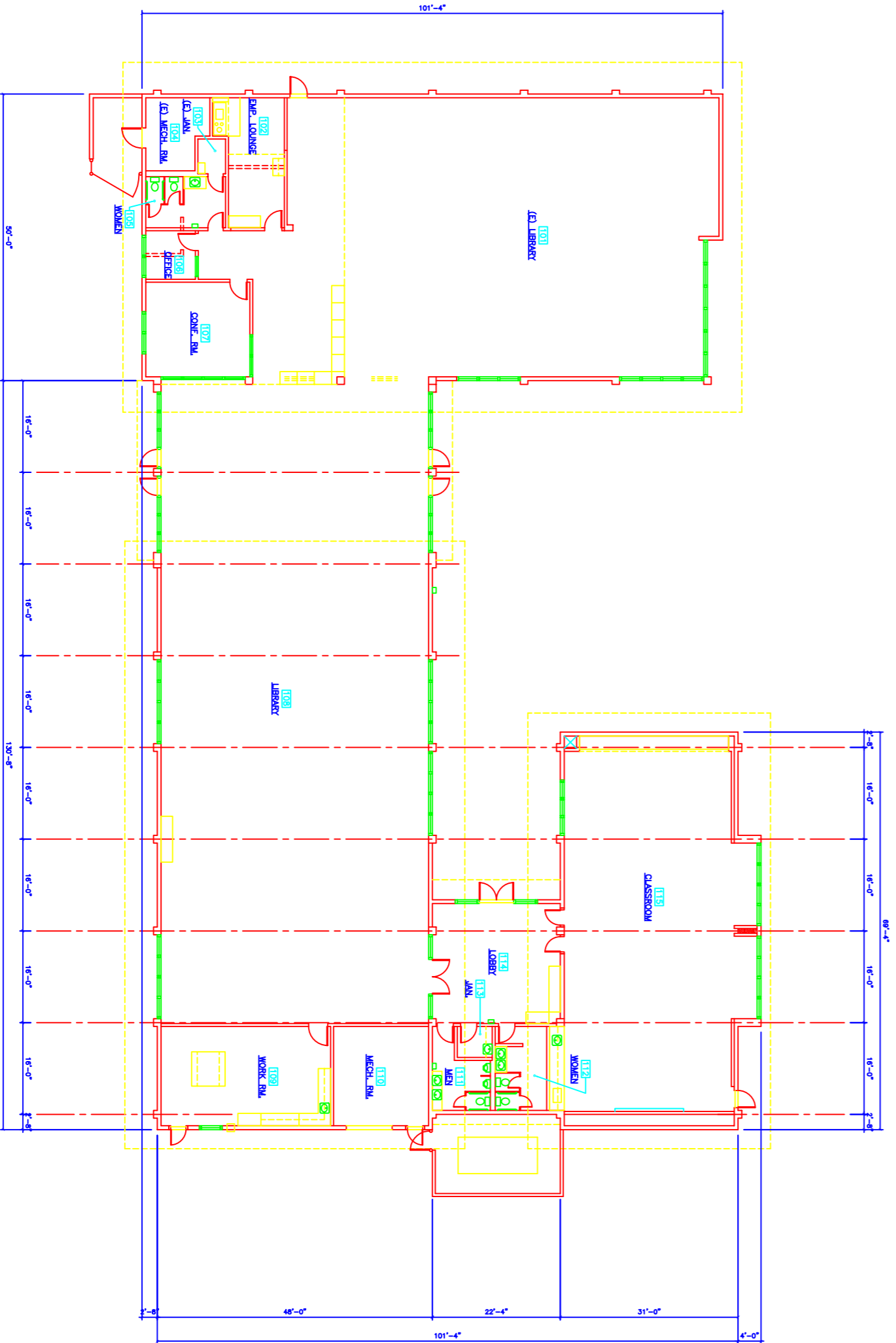
WEST ELEVATION  
SCALE: 1/8" = 1'-0"



PARTIAL SOUTH ELEVATION  
SCALE: 1/8" = 1'-0"



NORTH ELEVATION  
SCALE: 1/8" = 1'-0"



FLOOR PLAN  
SCALE: 1/8" = 1'-0"

GLOBAL ASSOCIATES

[www.convert2cad.com](http://www.convert2cad.com)